

The Path to Intellectual & Developmental Disability Services



Welcome to Creative Supports



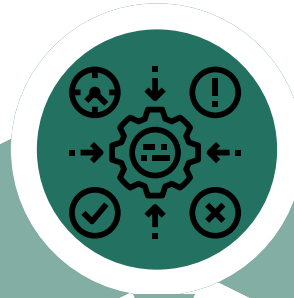
Personal Agent (PA)

A Personal Agent/Case Manager will be assigned to assist you with coordinating services. You should receive a letter within 10 days introducing the Personal Agent



Welcome meeting

At this meeting you will be able to meet your Personal Agent. They will be providing information regarding the different services available to you and scheduling meetings to begin the process



Assessment/ plan building

An Oregon Needs Assessment (ONA) will be completed and then the PA will assist you with building the plan

for services you want/qualify for



Choosing a service provider

Your PA will provide you with information on the different types of providers available and the information on hiring a provider



Living the life you want with the support you need/choose

Your PA will discuss how often they will make contact with you